



atena[®]

THE COMPANY
BOOK

ARCHITECTURAL
SYSTEMS

*Day after day, we shape
the future by conceiving
and creating innovative
architectural systems
for metal ceilings and
coverings, which become
part of domotic buildings,
where even the finishing
elements will be dynamic
and intelligent.*

Raimund Mann

VISION



INNOVATIVE ARCHITECTURAL SOLUTIONS

For more than 30 years, Atena has been conceiving and manufacturing high performance metal ceilings, external coverings and naval fittings, suitable for the international market.

As a result of the continued efforts in developing innovative architectural solutions, Atena realizes the ideas of designers all over the world: for each specific area, the history of an industrial product conceived to overcome construction limits and design canons.

MILESTONES

Expectations, purposes, aims and challenges: an history of projects, innovation and research.

STEEL STRONG

In 1988 Atena open its doors to produce **guides** and **channels** for **dry construction system**, immediately afterwards launched the manufacturing of **staves** and **open cells** for metal suspended ceilings and **sunscreens** for external coverings. In 1991 the historic **Atena Steel Strong** T-grid range was born. This period was marked by the development of the internal market and achievement of the first international partners.

1988

ENIGMA

In this period was created **Metal Modular** a complete range of lay-in and clip-in metal ceiling systems and **Enigma** was recognized as the best technical solutions to realized compact and uniform metal ceilings with concealed structure.

In 1994 Atena developed the first external covering with the **Atena Formal** system in aluminum tiles, followed by the introduction of **Linear** range.

1996 marked the entrance of Atena in the **naval sector** with the production of custom made metal ceilings for the Disney Magic cruise ship, inaugurated on 17 April 1997.

1994

SPECIAL

In 2001 **Atena Color** the nanotechnology powder coating plant was set up, to complete the production cycle in a unique factory, by checking directly all treatments.

With the introduction of alucobond and composite materials projects, the **external covering range** was extended. The naval market penetration sparked the improvement of custom made productions.

In 2003 the revolutionary **Atena Easy** T-grid with stainless steel hook was internationally patented, this was followed by the **Easy Anti-Seismic** system which gave rise to the antiseismic metal ceiling range.

During this period Atena launched **Matrox** for **hospital ceilings**, a certified system to prevent the exchange of air agents between the plenum and the environment.

2000

ATENA DECÒ

The purchase of the first sublimation machine gave birth to a new division: **Atena Decò** exclusively dedicated to the artistic decoration of metal surface to create walls and metal ceilings with every kind of effects.

To meet the needs of an increasingly sophisticated international market, Atena expanded its **design and consulting** office and extended its services in the fields of **acoustics, antiseismic engineering** and **finishing of metal ceilings** and **external coverings**.

2006

ANTISEISMIC RANGE

These were the years of **Flexit** range a new patented line of guides and channels for wavy plasterboard false ceilings and partition. Followed by the expansion of **Baffle** range with the introduction of the innovative **Spin** and **Tilt-Spin** systems to allow the installation of free-orientation modules with any radius and angle of inclination.

In partnership with the Department of Civil, Construction and Environmental Engineering of the University of Padua, Atena carried out the first international experimental campaign to test the global seismic behavior of its suspended ceilings.

2012

DRAW THE FUTURE

The continuous diversification of products and markets led the company to expand its hospital product range: **ATENA H**.

Belong to this range the **24** and **35 Syncro Evo**, two innovative solutions properly conceived to guarantee maximum air-tightness, ensuring fast laying steps.

Always looking for the perfect combination of functionality, comfort and design, Atena renews itself every day, developing technical solutions properly conceived to assure the maximum stability, even to the most "daring" achievements.

Because the system is shape and the shape is system: balance of geometry in space, qualitative excellence of workmanship and materials.

2020

GLOBAL PRESENCE



100%
Made in ITALY

***All production processes
in the distinctive Italian
factory, in the province
of Venice.***

Local Production Global Distribution

Atena operates in **over 50 countries**, with partners and local dealers to support designers, installers and retailers, with a sales assistance service and specialized technique consultancy; a controlled and certified supply chain from the raw material to the finished product.

Abu Dhabi
Algeria
Saudi Arabia
Australia
Azerbaijan
Belgium
Bosnia-Herz.
Bulgary
Canada
Cyprus
Croatia
Czech Republic

Denmark
Estonia
Finland
France
Georgia
Germany
Ghana
Greece
Israel
Italy

Kazakhstan
Latvia
Lithuania
Luxembourg
Malta
Morocco
Montenegro
Niger
Netherlands
Panamá

Perù
Poland
Portugal
Qatar
United Kingdom
Romania
Russia
Senegal
Serbia
Sharjah
Singapore

Slovakia
Slovenia
Spain
USA
Sweden
Switzerland
Tunisia
Turjey
Hungary



MADE IN ATENA

*The industrial
dimension of Italian
craftsmanship*

**Specialized production
departments** to cover all processes
from coils and sheets cutting, to the
metal aesthetic finishing: a **unique
integrated manufacturing plant**
with a total quality control.

AUTOMATED LINES

Standard production
manufacturing

SPECIAL DEPARTMENT

Custom-made
productions

PRECISION MECHANICAL WORKSHOP

Special components
manufacturing

NANOTECHNOLOGY POWDER COATING

In compliance with Qualicoat
Specifications.

Atena has an advanced
manufacturing
engineering process, a
workshop focused on
custom made products
and specialized teams
in pre-testing, to make
executive the most
challenging visions and
create special metal
bodies for interior and
façade architecture.



KNOW-HOW

*For high
performance
systems*



ACOUSTIC TREATMENT

An environment properly treated from the acoustic point of view, where everything is precisely balanced, people can enjoy a new sound dimension and experience a superior listening quality level. The Atena **acoustic modules** are properly conceived and **tested** by certified laboratories, in order to balance the sound wave absorption and reflection.

ANTISEISMIC DESIGN

All Atena metal ceilings can be reinforced with **anti-seismic kit** conceived by Atena and verified by the Department of Civil, Building and Environmental Engineering of the University of Padua, DICEA.

LIGHTING STUDIO

For a proper illumination of spaces and locations, exploiting in the right way both the sun and artificial lights, at the design stage Atena cooperates with Atena Lux to set the **lighting calculations** and offer proper technical solutions for metal ceilings, wall coverings and façade, perfectly integrated with **lighting elements**.



PRODUCT CONSULTANCY

DESIGN DEVELOPMENT

Ask for a **specialized technical consultancy** to choose the proper covering system of **metal ceilings** and **façade**.

INSTALLATION ASSISTANCE

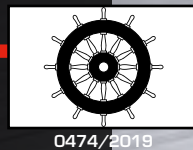
To achieve **high performance levels**, Atena supports all customer from design to installation phases, offering training on laying methods and specialized consultancy in **technical feasibility**,

application fields and **aesthetic finishing**. Moreover, to assist designers step by step Atena provides a complete service in acoustic, lighting and anti-seismic engineering.

TECHNICAL QUALITY

From the idea to the product placement in the market through a certified management process.

Member of CISQ Federation



All products for civil applications are tested by independent laboratories, according to the UNI EN 13964, meet the requirements of NTC 2018 and DM 11 January 2017, CAM.

The products intended for the naval market are certified according to MED DIRECTIVE 2014/90/EU.

TEST

PRODUCT TEST & CERTIFICATION

MED

NAVAL CERTIFICATION

I.Q.

MANAGEMENT SYSTEM

TM

RESEARCH & DEVELOPMENT

ECO

ENVIRONMENTAL SUSTAINABILITY

GREEN PRODUCTS

*Quality,
environment,
health, safety:
together for
sustainable
architecture.*

Atena's commitment to **Environmental Sustainability** and **Safety** passes through all main company processes to produce safe products, whose use contributes to the construction of **high performance buildings**, conceived to achieve the **highest levels of comfort, healthiness** and **respect for the environment**.



ENVIRONMENTAL SUSTAINABILITY AND SAFETY



GREEN
ENERGY

By joining the
"100% clean energy
Dolomiti Energia" certification
program, Atena uses energy from
renewable sources.

ENVIRONMENT



Raw materials produced
with **recycling** processes;
Aluminum and steel
products **100% recyclable**;
Products that will not
become **hazardous wastes**
during demolition / removal.



LIFE BASED DESIGN

Acoustics, lighting
technology and shape of
spaces: the Atena **false
ceilings** and **coverings**
are conceived to create
comfortable environments
that support the **psycho-
physical well-being** of
people according to the
**modern environmental
psychology** criteria.

EPD



EPD 2020 is the
certification program
started by Atena to
stand out its best
systems from the
environmental point
of view, in compliance
with the current
green procurement
requirements.

HEALTHINESS



Safe and fireproof
products
that do not release
dangerous substances
into the environment;
Paints and sublimations
are performed with **VOC-
free substances**.



SEISMIC ENGINEERING

**Academic and
experimental
research**,
patented systems
and technical
solutions for the
highest degree of
earthquake safety.



GREEN BUILDING

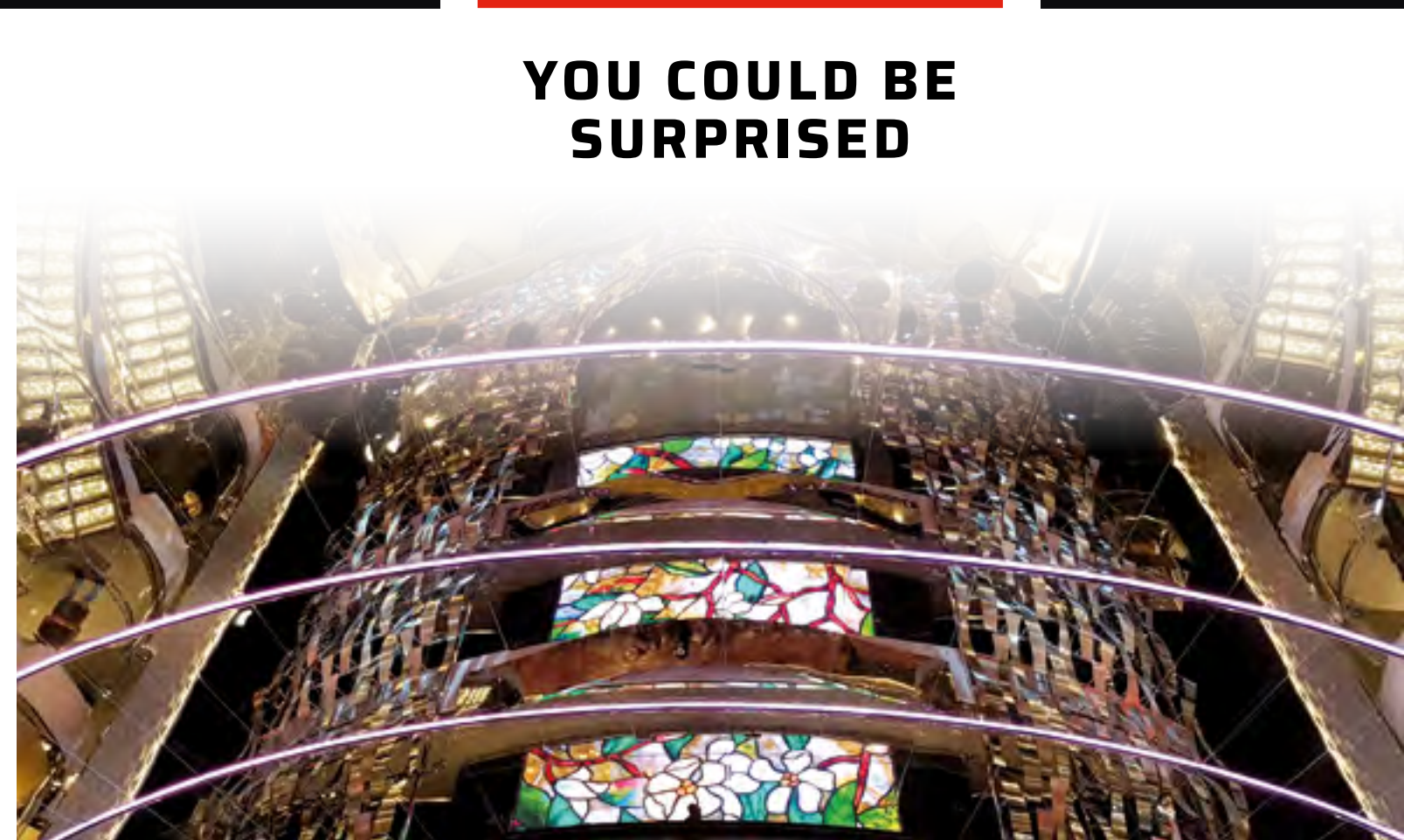
Get credits for building
certification according
to the **LEED protocol**
and to BREEAM and
ITACA standards for
cross-cutting aspects,
by using Atena
products.



*To be **UNLIMITED**
in technical development
of architectural solutions*

**WHAT
WE DO
?**

**YOU COULD BE
SURPRISED**



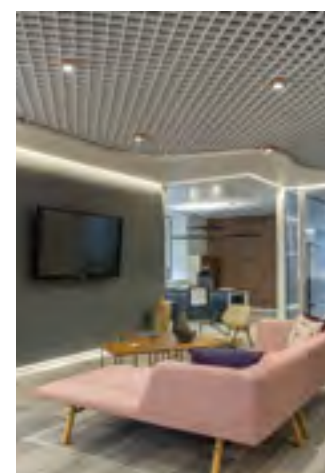
01

ARCHITECTURAL METAL CEILINGS

Wide range of standard and custom made metal ceilings easy to install, safe and longlasting, which stand out for the quality of the materials and the variety of aesthetic and decorative finishing.

OPEN CELLS

LAY-IN/ON | CONTINUOUS



The Atena metal ceilings' range includes, both the standard modular systems made of lay-in/lay-on and clip in **tiles**, **staves**, **baffles**, **open cells**, and **special custom made** solutions. Belong to this specific line the **acoustic islands** and all systems coplanar, **curvy** or minimal, in steel, aluminum or **expanded metal**, to be installed both with visible and hidden structure.

BAFFLES



For specific areas such as hospitals, operating theaters and laboratories, Atena has developed a line of **certified high-tight solutions**, properly conceived to reduce the exchange of air agents between the pleum and the room; treated with a special antibacterial powder coating, this range of metal ceilings improves the healthiness of the environment.

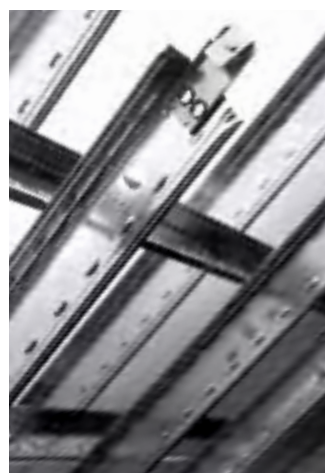
STAVES

SELF BEARING | ON CARRIERS



To complete its systems Atena has developed the **Multichannel**, an innovative **partition KIT** suitable to integrate metal ceilings and room dividers into a single technical-aesthetic solution. With its minimal look and polyvalent design Multichannel has been conceived to house lighting fixtures, partitions, glass walls, roller blinds, projectors screens, aeration panels and concealed electric ducts.

T-GRID



MODULAR TILES

LAY-IN | LAY-ON | CLIP-IN



CUSTOM MADE

LAY-IN/ON | CLIP-IN | HOOK-ON



HOSPITAL SYSTEMS



ACOUSTIC ISLANDS



PARTITION KIT

WALL COVERINGS | CHANNELS





Flower island | Macramè mesh



Base 10 H40 open cell



Baffle Free Flow



Z System Wide Space

02

EXTERNAL FAÇADE

Atena has developed a complete range of external coverings, including systems with custom made modules made in aluminum tiles, expanded metal, special flat sheets, staves and sunscreens; different types of metal claddings that can be integrated into a unique architectural solution.



FORMAL E LINE UP



LINEAR STAVES & SUNSCREEN



EXPANDED METAL



- **Wide range** of technical solutions.
- **Total integration** of different types of coverings.
- **Custom-made** complements for the application of lighting fixtures and accessories.
- System design for **ventilated** and **insulated façades**.
- **Easy installation** steps.
- **Wide range of materials** and aesthetic finishing.
- **"3D MOOD"** system to create special 3D shapes.
- Innovative **"Dot Art"** drilling to reproduce any image in a composition of perforated panels.
- **Ecofriendly systems**, to achieve LEED scores.



Metal mesh external covering

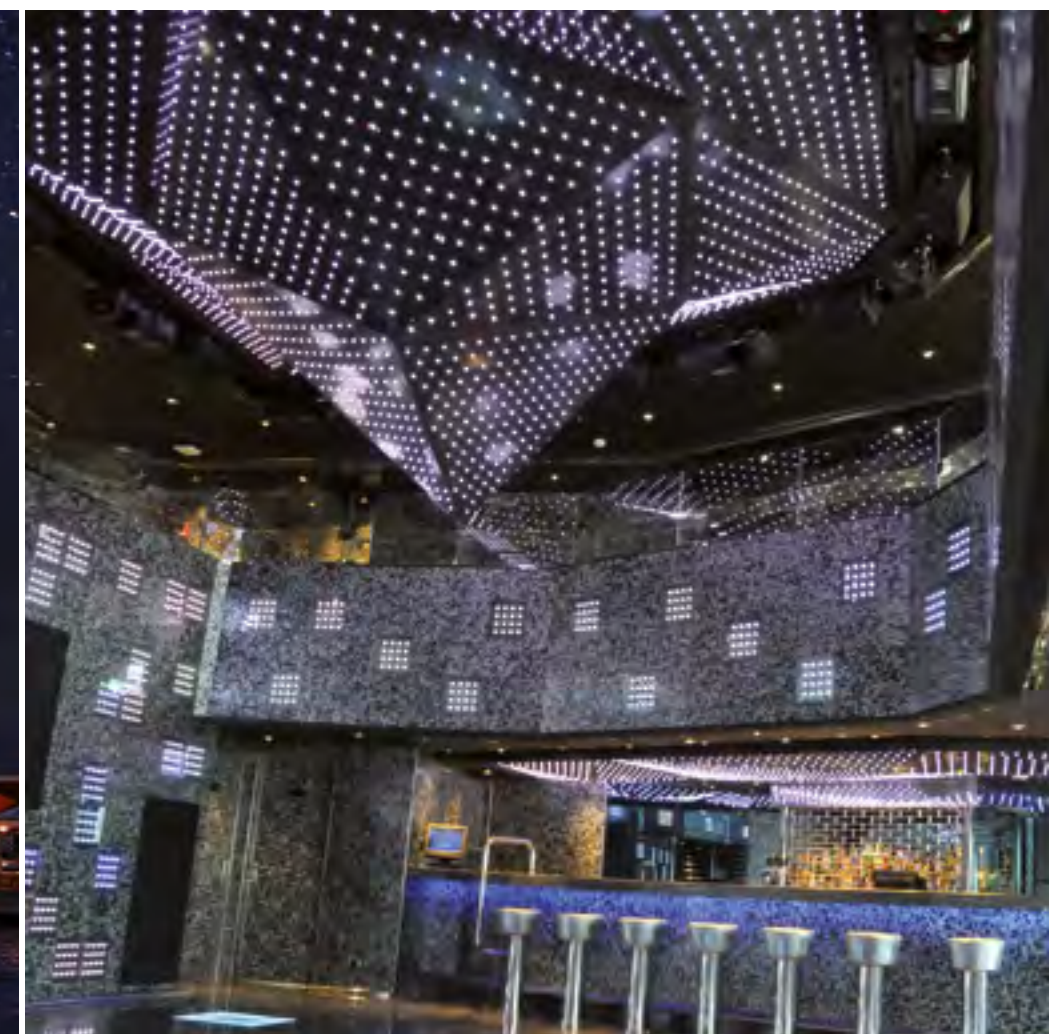


Metal mesh external covering



Formal system external covering





STAVES' SYSTEMS



TILES' CEILINGS



SPECIAL SHAPES



03

NAVAL FITTINGS

In this field, ATENA signs the metal ceilings of the most prestigious cruise ships, thanks to a technical department able to design and develop extremely special products. Precious finishing and sublime atmospheres, wide spaces and style choices to create different environments in enclosed locations. For each specific area, Atena offers RINA certified technical solutions according to the MED 2014/90/ EU regulations.



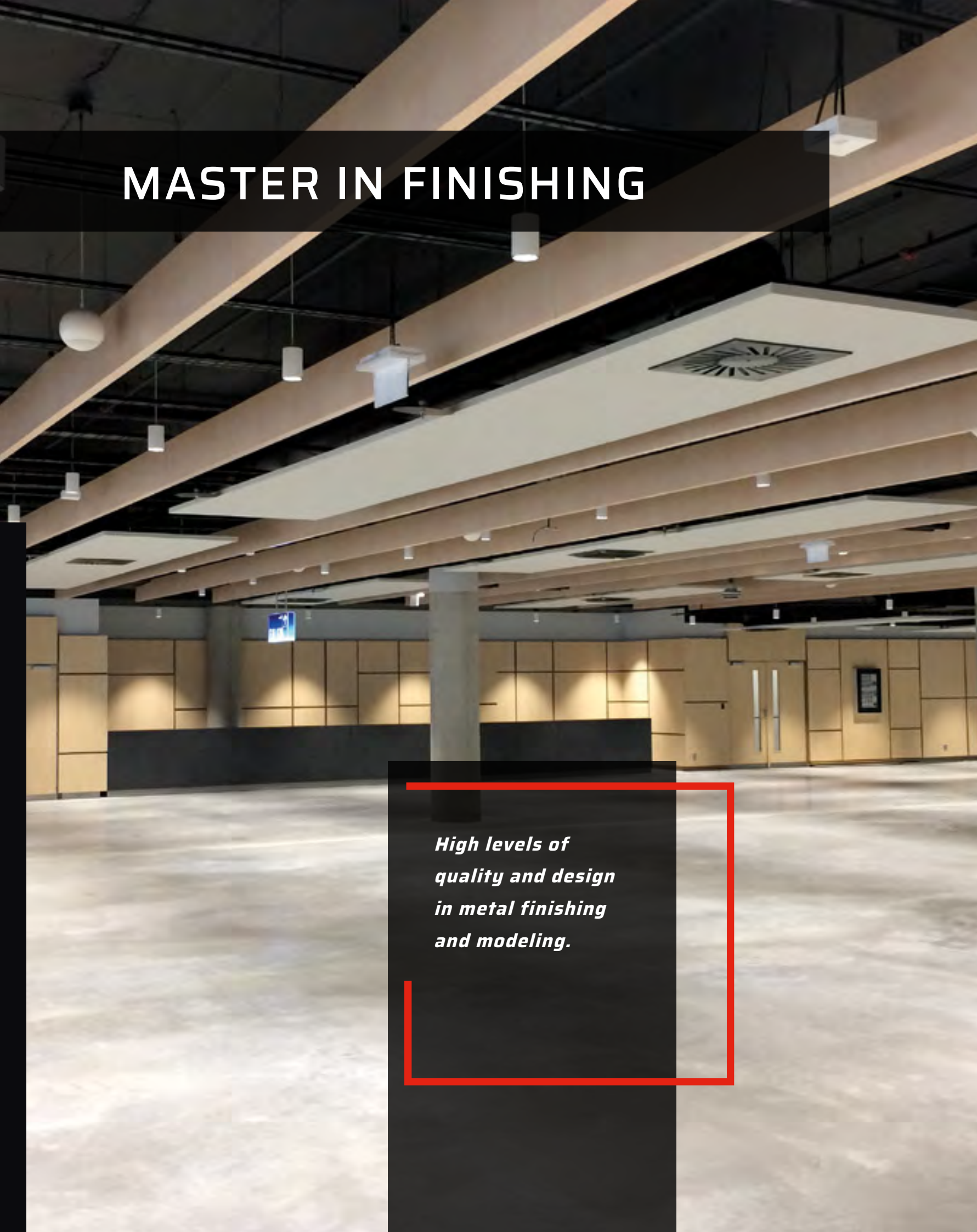
Mirror finishing special panels



Sky sublimated special panels



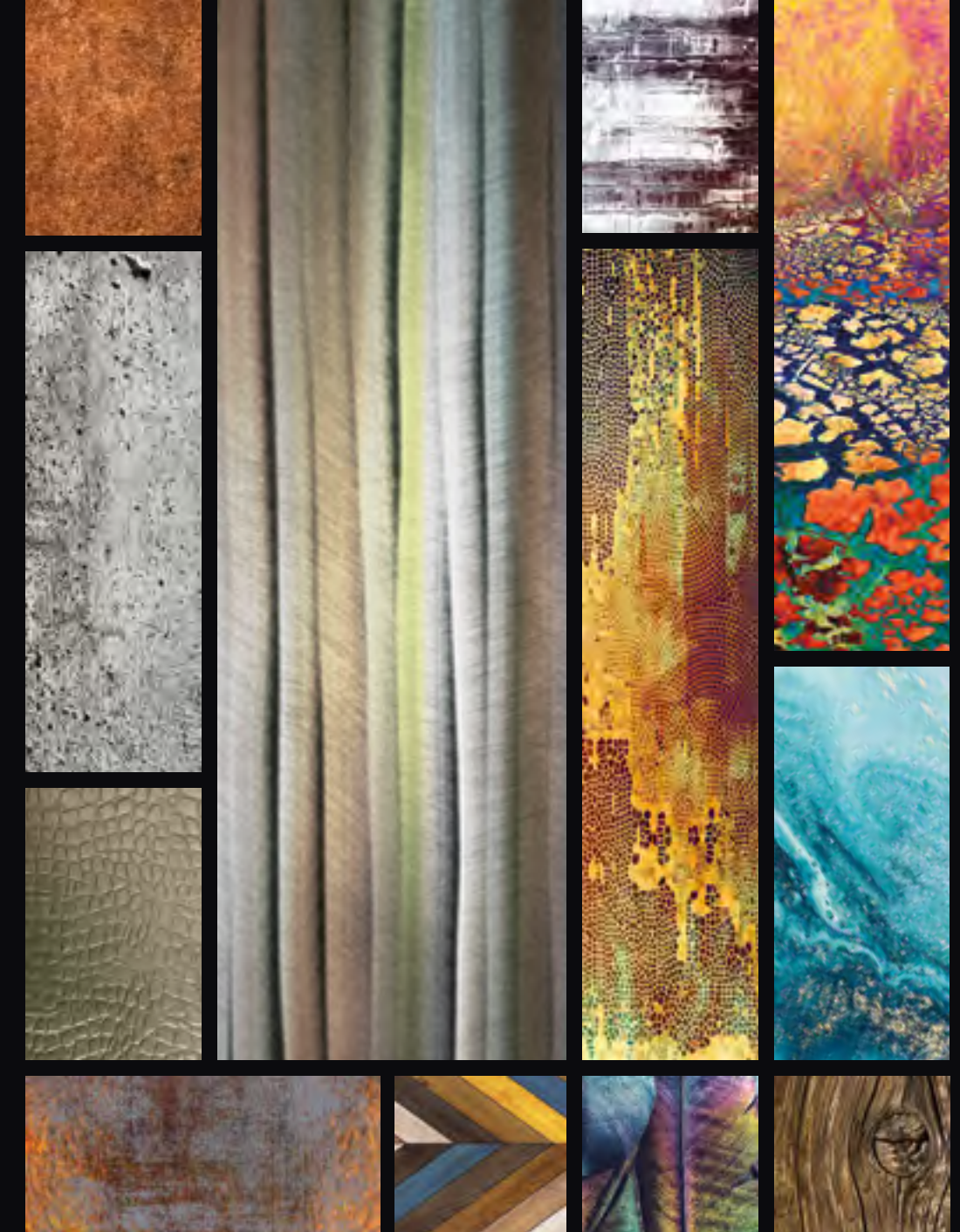
Matrox panels



MASTER IN FINISHING

*High levels of
quality and design
in metal finishing
and modeling.*

***High levels of
quality and design
in metal finishing
and modeling.***



04

DRY CONSTRUCTION SYSTEMS

The dry construction systems represent, still today, a well appreciated architectural solution, to shape the environments with false ceilings, partitions, counter walls and niches. For this application field, Atena produces structures, guides, channels and profiles according to UNI and DIN standards. A wide range of certified systems to realize every creations of interior design.



ph: Federica Santeusano

"U" CHANNELS & "C" PROFILES



FLEXIT



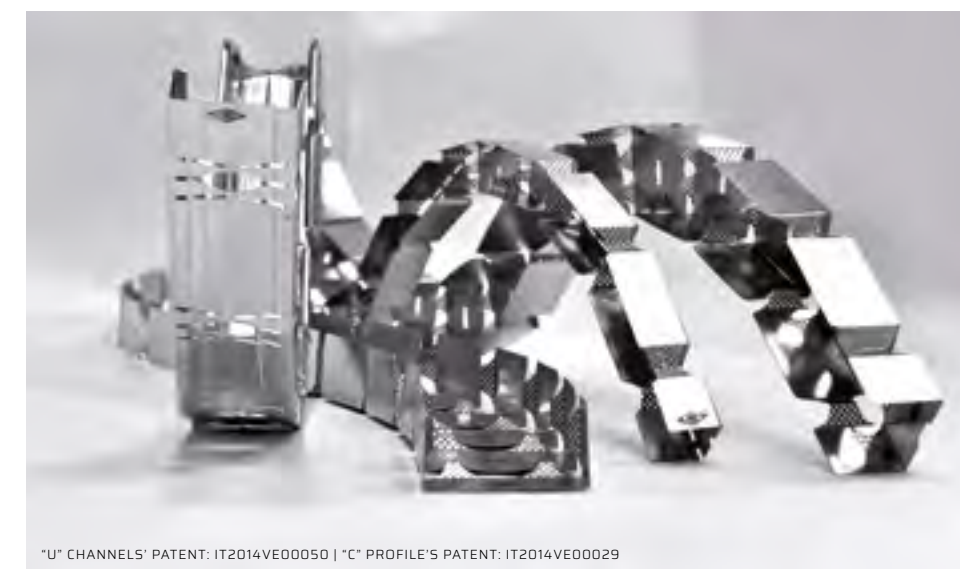
B43 | STRUCTURES FOR FALSE CEILINGS



FLEXIT is the new **Atena** range of **patented flexible profiles**, conceived to realize **wavy plaster-board suspended ceilings, walls and counter walls**.

FLEXIT: the universal wave

- universal "C" profile
- high quality material
- easy to install
- high stability
- maximum flexibility.



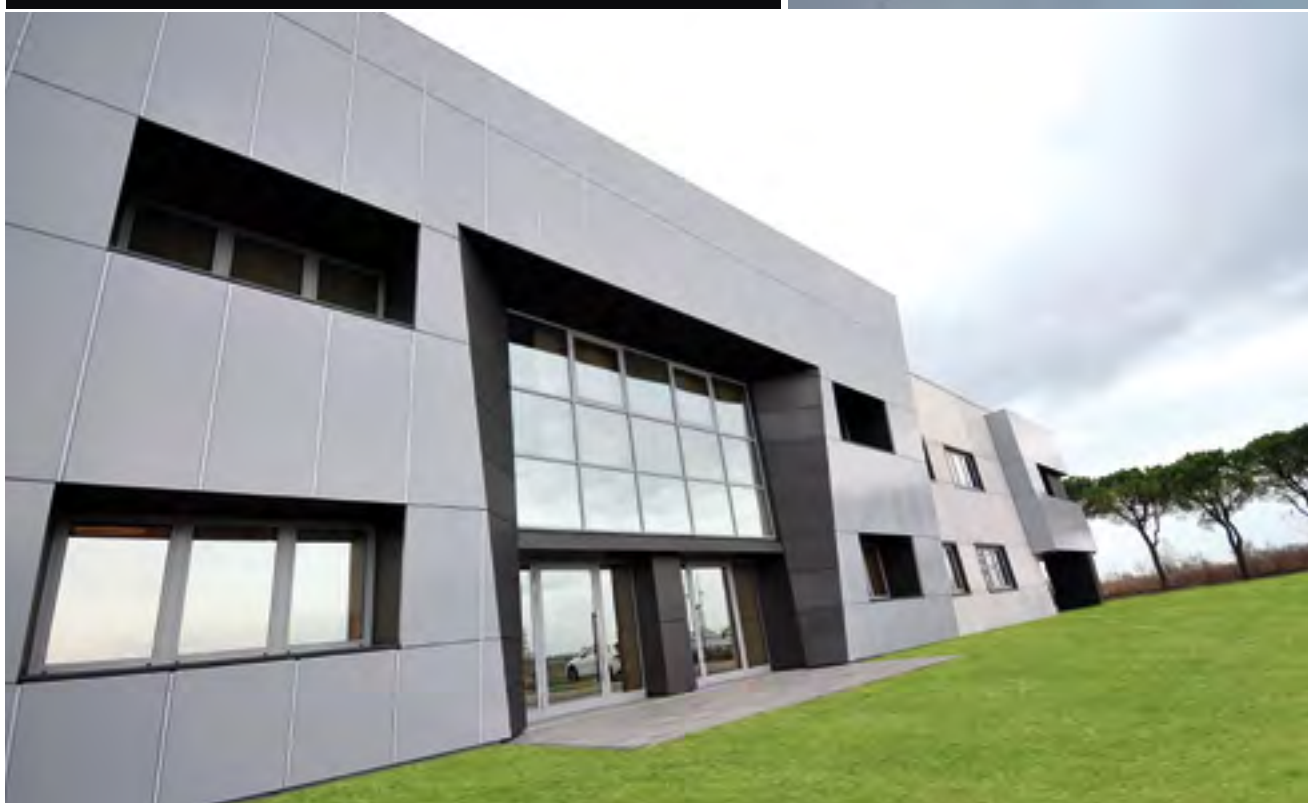
"U" CHANNELS' PATENT: IT2014VE00050 | "C" PROFILE'S PATENT: IT2014VE00029

05

REFERENCES

Technical solutions for every
type of environment.

Wood effect standard serie Baffle
Formal system external covering
Special metal ceiling for cruise ship





Mosh Benjamin - Pro Pixel Panama - Mallol Arquitectos



Wavy shaped acoustic islands



Carlo Mingotti - Studi Mingotti Architetti Associati
(new offices Danieli Automation S.p.A.).

OFFICES & INDUSTRIAL BUILDINGS



Baffle standard serie



Monolama open cells



Baffle standard serie

Tamás Bujnovszky

OFFICES & RETAIL

Formal external covering





Special panels



S series staves



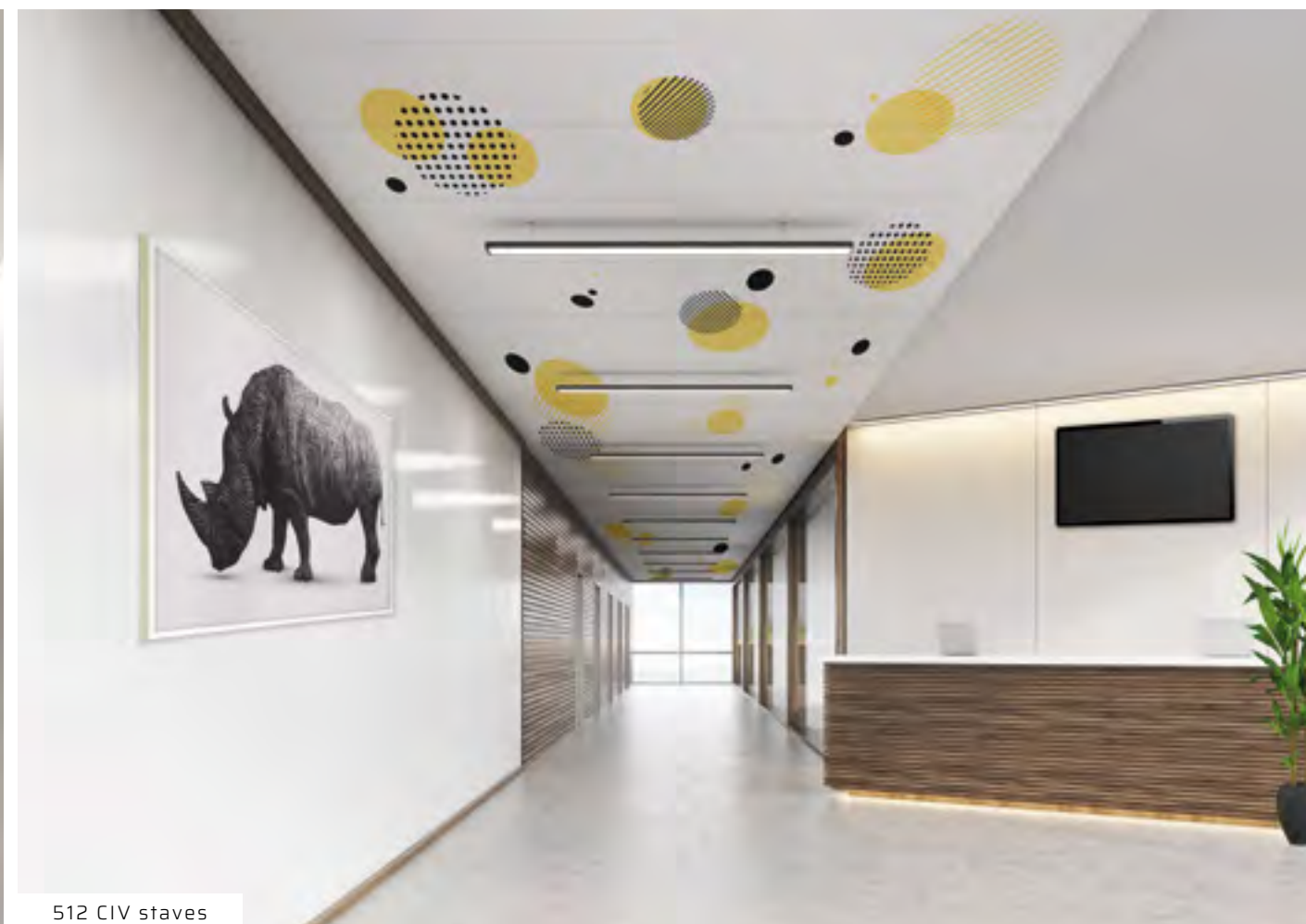
V series staves

Metal mesh islands





Base 10 H40 open cell

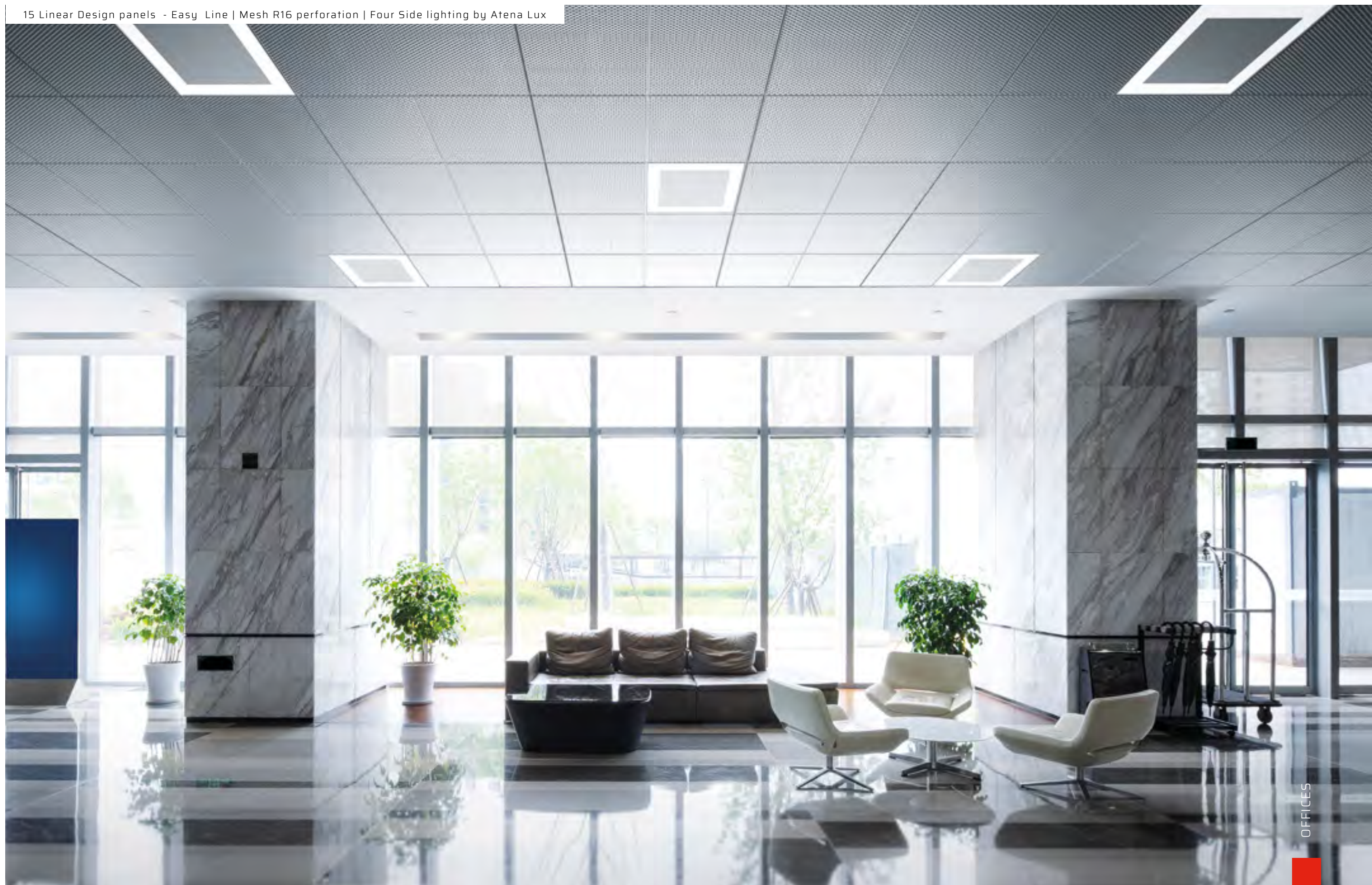


512 CIV staves



15 Linear Design panels - Easy Line

15 Linear Design panels - Easy Line | Mesh R16 perforation | Four Side lighting by Atena Lux





24 Linear Tegal panels | R10 mesh



Z System Wide Space



Enigma Syncro coffered

Formal external covering





Decorative partition with special Dot Art perforation



Z System | mesh Bouclé



Wall application Baffles

Air-tight Enigma Syncro XL





24 Syncro Evo air-tight ceiling



Air-tight Enigma Syncro XL



Sublimated Enigma tiles

Metal mesh external covering





Detail of mirror finishing composite panel covering | special laser cut decoration

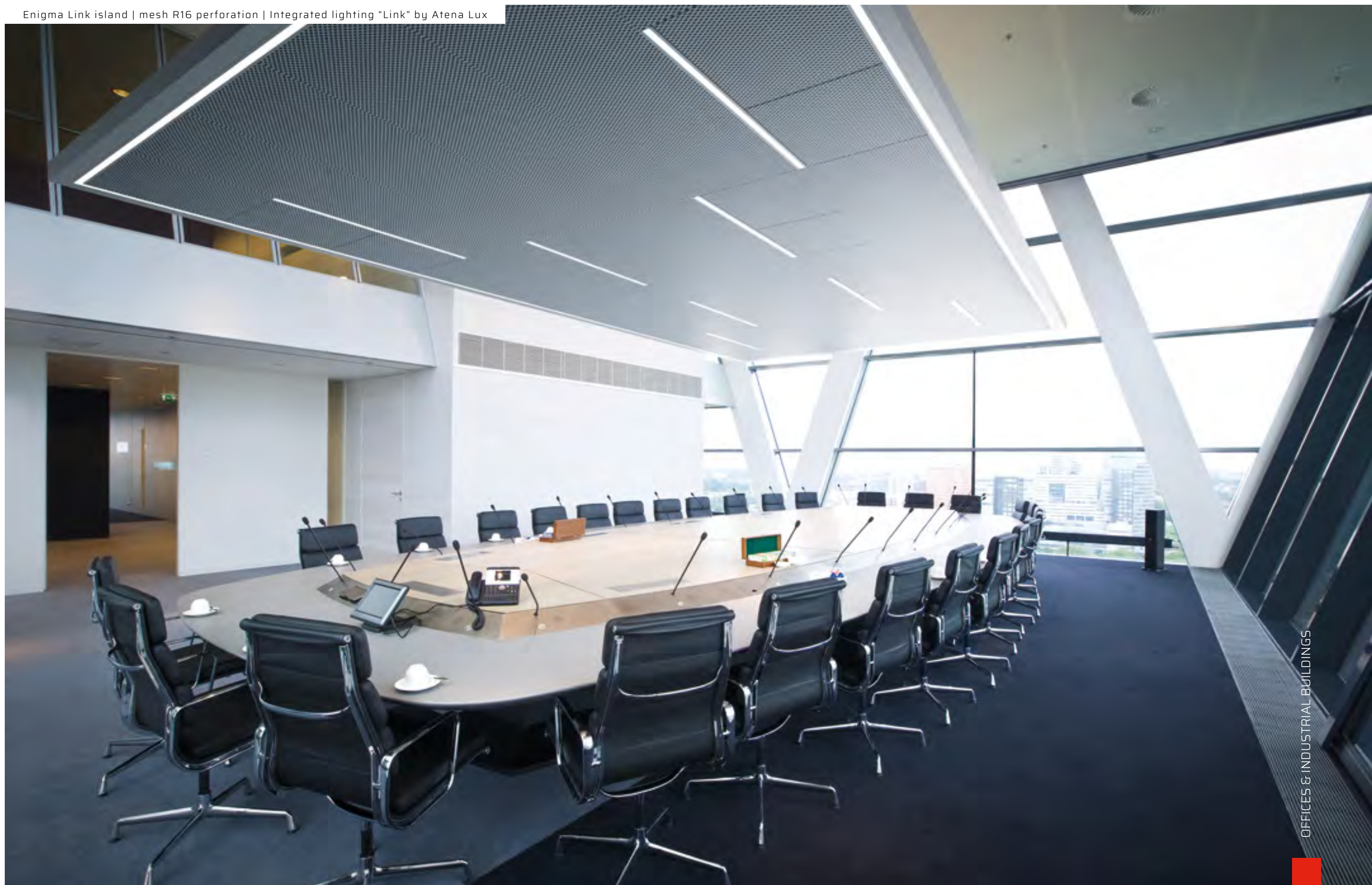


Formal system covering



Linear staves covering

Enigma Link island | mesh R16 perforation | Integrated lighting "Link" by Atena Lux





Special panels



Special panels



Special panels

06

LOOKING FOR
TECHNICAL SOLUTIONS?

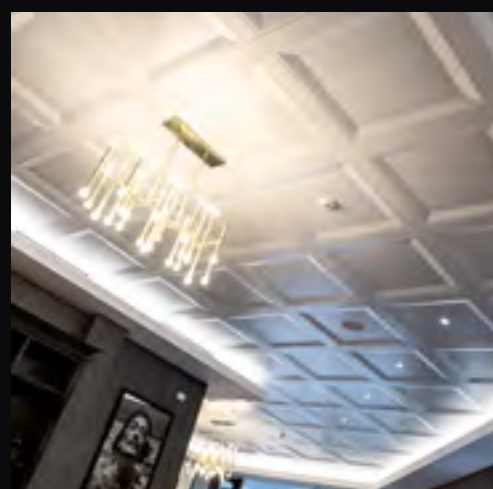




07

GIVE US A TRY

Give us a try, send us your project we will study the best technical solution to create together innovative works.



SEND US
YOUR
Project

CIVIL DIVISION

Airport of Roma Fiumicino | Airport of Venezia | Headquarter Red Bull - Austria | Ferrari Plant | Aprilia Plant Scorzè (VE) | Blockbuster Shop | Armani Boutiques | Oviesse Shops | Procter & Gamble Offices | Poste Italiane offices | Telecom offices - Milano P.zza Borsa, Padova, Bologna | Toyota car dealer - Portogruaro (VE), Verona | FIAT Car dealer | AUDI car dealer (VE - VR) | Progress Pubblicità Agency headquarters - Padova | Mega Store Mondo Convenienza - Marcon | Hôpital PMU Lausanne - Swiss | Radiologie 2000 de Geneve - Swiss | Supermarkets Side S.p.A. | Bernardi Plant | Shopping mall Amaro | Multiplex Cinema Cinestar - Fiume Veneto (PN) | Multiplex Cinema Europlex - Milano | Saritel | Shopping Mall Arteni | Minin Clothes shop | Color Print headquarters - Coseano (UD) | Commercial building - Buttrio (UD) | Commercial building - Cavriago (RE) | Office building - Cornaredo (UD) | Dal Cin clothes shop - San Fior (TV) | Euro Brico shop | Imprimerie Nationale Paris - France | Boureaux du Studios d'Architecture ORY Paris - France | Industrial laundry Fantuzzi - Fiume Veneto (PN) | Corriere dello Sport Roma | Record Cucine headquarters - Blessaglia di Pramaggiore (VE) | Vetreria Veneta headquarters - Blessaglia di Pramaggiore (VE) | Hôpital des Enfants - Ginevra (Swiss) | Ospedale di Bellinzona - Swiss | Institut Universitarie de Pathologie di Losanna - Swiss | Hôpital de la Vallee - Swiss | Pavillon de Logopedie - Swiss | Hospital Bambin Gesù - Roma | Medical Centre San Biagio (VE) | Hospital San Matteo - Pavia | Atlas Banka | Tour Europe Paris La Defense - France | Chantier 116 Champs Elysees - Paris. Architectes ORY - France | Velizy Campus Paris - France | Opera - Place de L'Opera Paris - France | Perdtemps/Beckmann building - Nyon, Swiss | Eurobrico Padova - Bolzano | RAI offices Roma | Shopping mall Verona Uno | Yamaha motorcycle dealer - Verona | Hospital San Salvatore Aquila | INAIL offices Aquila | Saint Lazare: Siège social des Galeries La Fayette Paris - France | Elysee La Defence: City Center - Paris - France | Airport of Ginevra - Swiss | Aeroporto of Pristina - Kosovo | Airport of Praga - Czech Republic | UBS offices | Hospital in Split - Croatia | Sport Center - Stožice Lubiana - Slovenia | Cankarjev Dom Lubiana - Slovenia | Airport of Ciampino | Bucarest Airport - Romania | Vodafone Bucarest - Romania | G8 headquarters (scuola G. F.) Aquila | INPS headquarters Etiopia | Hospital B.go Trento Verona | Metro Budapest - Ungheria | Santafe Palladium - Czech

Republic | Hospital S. Maria delle Croci - Ravenna | Airport of Orio al Serio Bergamo | Civil Hospital Montebelluna (TV) | Metro Praha - Czech Republic | O2 - Czech Republic | Hospital Gervasutta Udine | Retirement Home Guicciardini - Valdobbiadene (TV) | Civil Hospital di Udine | Galerie Teplice - Czech Republic | Plant and offices of Feroli Verona | Art Museum - Gallerie dell'Accademia di Venezia | Hotel Helia Budapest - Hungary | Restirement Home Villa Monga (VR) | Diocesan Center Verona | Medipole Nouméa - New Caledonia | Bad Abidjan - Ivory Coast | Schüco Iternational Italy headquarters (PD) | IKEA Villesse Gorizia | Dagali Fina Swimming Pool Budapest - Hungary | Budapest museum - Hungary | Eleetrolux Porcia offices (PN) | Residence Merville Jesolo (VE) | Riverbank Hotel London - UK | Train station Mława - Poland | Luxottica headquarters Agordo (BL) | CIC (Centre International des Conferences) Algeri - Algeria | Auditorium - Saudi Arabia | Bauli plant (VR) | Directional Center Verona Forum (VR) | V17 - Hungary | Budapest Congress Center - Hungary | Napol Arredamenti Godega di Sant'Urbano (TV) | Ericsson - Hungary | GTC Office - Hungary | IFC headquarters - Israel | C.C. Zaragoza - Spain | Hospital of Cracovia - Poland | Airport of Trieste - Ronchi dei Legionari (TS) | Telekom - Hungary | Budapest Airport - Hungary | Scalo Portuale La Spezia (SP) | Shopmark - Hungary | City House Lobby - Singapore | Sede Cariparma - Parma (PR) | Università Kladno - Czech Republic | Italian embassy in Tokio - Japan | Marina One - Singapore | Post bank - Slovakia | C.C. Auchan - Fano (PU) | C.C. Nave de Vero - Mestre | C.C. Porta di Roma - Roma | Hotel Prezident Praha - Czech Republic | MTS Martin - Slovakia | TAV Afragola - Napoli | Airport of Firenze | Rada Building - Panama | Maribor School - Slovenia | Bep's - San Donà di Piave (VE) | Trust Complex Bab Ezzouar - Algeria | C.C. Auchan - Senegal | Palasport Primo Carnera - Udine | Apranga logistic Center Vilnius - Lithuania | LIDL - Lithuania | Health clinic Rizzola - San Donà di Piave (VE) | La Barberia - Panama | Hospital of Latisana (UD) | Google headquarters - Swiss | Adnoc Service stations - Abu Dhabi | Hospital of Bolzano | Court of Milano | Hospital Maggiore of Bologna | Amazon Bucarest headquarters - Romania | Hospital Bellaria of Bologna | Eurovia - Czech Republic | Civil Hospital of Castel San Pietro Terme (BO) | Credit Agricole Paris - France | Trigone/Quartz Paris - France | Ima S.p.A. - Bologna | Calgary Airport - Canada | Lins Praha - Czech Republic | Ravani Acciai Ferrara | Purifier of Servola Trieste | Istituto di Medicina legale "Università La Sapienza" - Roma | Fondazione Poliambulanza Istituto Ospedaliero di Brescia | Goeteborg Airport - Sweden | Microsoft Bucarest headquarters - Romania | B-Trend S.r.l. - Feletto Umberto (UD) | Helsinki Airport - Finland | Radio Company - Padova | Colegio Trilce - Perù | New offices Danieli Automation S.p.A. - Buttrio (UD) | Continental - Lithuania | Ada Mall - Serbia | Oran airport - Algeria | General Hospital Curicò - Chile | Harvard University - USA | Intel - Israel

NAVAL DIVISION

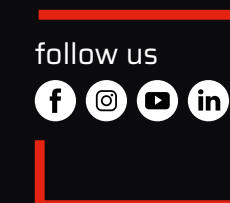
Disney Magic - Disney Cruise Line 1998 | Disney Wonder - Disney Cruise Line 1999
| Amsterdam - Holland America Line 2000 | Golden Princess - Princess Cruises 2001 |
Star Princess - Princess Cruises 2002 | Carnival Conquest - Carnival Corporation 2002
| Zuiderdam - Holland America Line 2002 | Oosterdam - Holland America Line 2003 |
Westerdam - Holland America Line 2004 | Arcadia - P&O Cruises 2005 | Noordaz - Holland
America Line 2006 | Carnival Glory - Carnival Corporation 2003 | Caribbean Princess -
Princess Cruises 2004 | Carnival Valor - Carnival Corporation 2004 | Costa Magic - Costa
Cruises 2004 | Carnival Liberty - Carnival Corporation 2005 | Crown Princess - Princess
Cruises 2006 | Costa Concordia - Costa Cruises 2006 | Queen Victoria - Cunard 2007 |
Carnival Freedom - Carnival Corporation 2007 | Costa Serena - Costa Cruises 2007 |
Emerald Princess - Princess Cruises 2007 | Ventura - P&O Cruises 2008 | Carnival Splendor
- Carnival Corporation 2008 | Eurodam - Holland America Line 2008 | Portaerei Cavour -
Marina Militare Italiana 2008 | Ruby Princess - Princess Cruises 2008 | Costa Luminosa
- Costa Cruises 2009 | Costa Pacifica - Costa Cruises 2009 | Odyssey - Seabourn Cruise
Lines 2009 | Sojourn - Seabourn Cruise Lines 2009 | Carnival Dream - Carnival Corporation
2009 | Silver spirit - Silvesea Cruises 2009 | Cruise Barcelona - Grimaldi Napoli 2009 |
Cruise Olimpia - Minoan Lines 2010 | Costa Deliziosa - Costa Cruises 2010 | Queen Elizabeth
- Cunard 2010 | Azura - P&O Cruises 2010 | Nieuw Amsterdam - Holland America Line
2010 | Carnival Magic - Carnival Corporation 2011 | Carnival Breeze - Carnival Corporation
2011 | Riviera - Oceania Cruises 2011 | Costa Fascinosa - Costa Cruises 2011 | MSC Divina
- MSC Cruises 2011 | Royal Princess - Princess Cruises 2012 | Le Soleal - Compagnie du
Ponant 2012 | MSC Preziosa - MSC Cruises 2012 | Silver Spirit - Silversea Cruises 2012 |
Costa Diadema - Costa Cruises 2013 | Regal Princess - Princess Cruises 2013 | Harmony
of the seas - Royal Caribbean 2014 | Britannia - P&O Cruises 2014 | Viking Star - Viking
Ocean Cruises 2014 | Koningsdam - Holland American Line 2014 | Carnival Vista - Carnival
Corporation 2015 | Viking Sea - Viking Ocean Cruises 2015 | Silver Muse - Silversea
Cruises 2015 | Majestic Princess - Princess Cruises 2015 | Seaburn Encore - Seaburn
Cruise Lines 2015 | Seven Seas Explorer - Regent Seven Seas Cruises 2016 | Viking Sky -
Viking Ocean Cruises 2016 | MSC Seaside - MSC Cruises 2016 | Viking Sun - Viking Ocean
Cruises 2016 | Oasis of the seas - Royal Caribbean 2016 | MSC Meraviglia - MSC Cruises
2016 | Carnival Horizon - Carnival Corporation 2017 | Seaburn Ovation - Seaburn Cruise
Lines 2017 | MSC Seaview - MSC Cruises 2017 | Viking Orion - Viking Ocean Cruises 2017

REFERENCE BOOK Rev 01 - 12/2019

PHOTOS:
PAG.20-33-34-79
FOTOLIA.COM
PAG.13-17-21-25-33-58-61-62-63-72-79
ISTOCKPHOTO.COM
PAG.3-6-8-9-10-11-13-14-18-24-28-33-51-55-62-79-84
SHUTTERSTOCK.COM
PAG.21-43
TAMÁS BUJNOVSZKY
PAG.21-38
BENJAMIN MOSH - PRO PIXEL PANAMA - MALLOU ARQUITECTOS
PAG.35
FEDERICA SANTEUSANIO

TO BE INSPIRED

atena-it.com





METAL CEILINGS AND COVERINGS

Atena S.p.A.

Via A. De Gasperi, 52 - 30020 Gruaro (VE) Italy

Ph: +39 0421 75526 - Fax: +39 0421 75692

atena-it.com - info@atena-it.com